

Get Early Visibility into Manufacturability & Product Cost



HCL DFMPPro

Deliver High Quality Product Designs Faster at Lower Costs

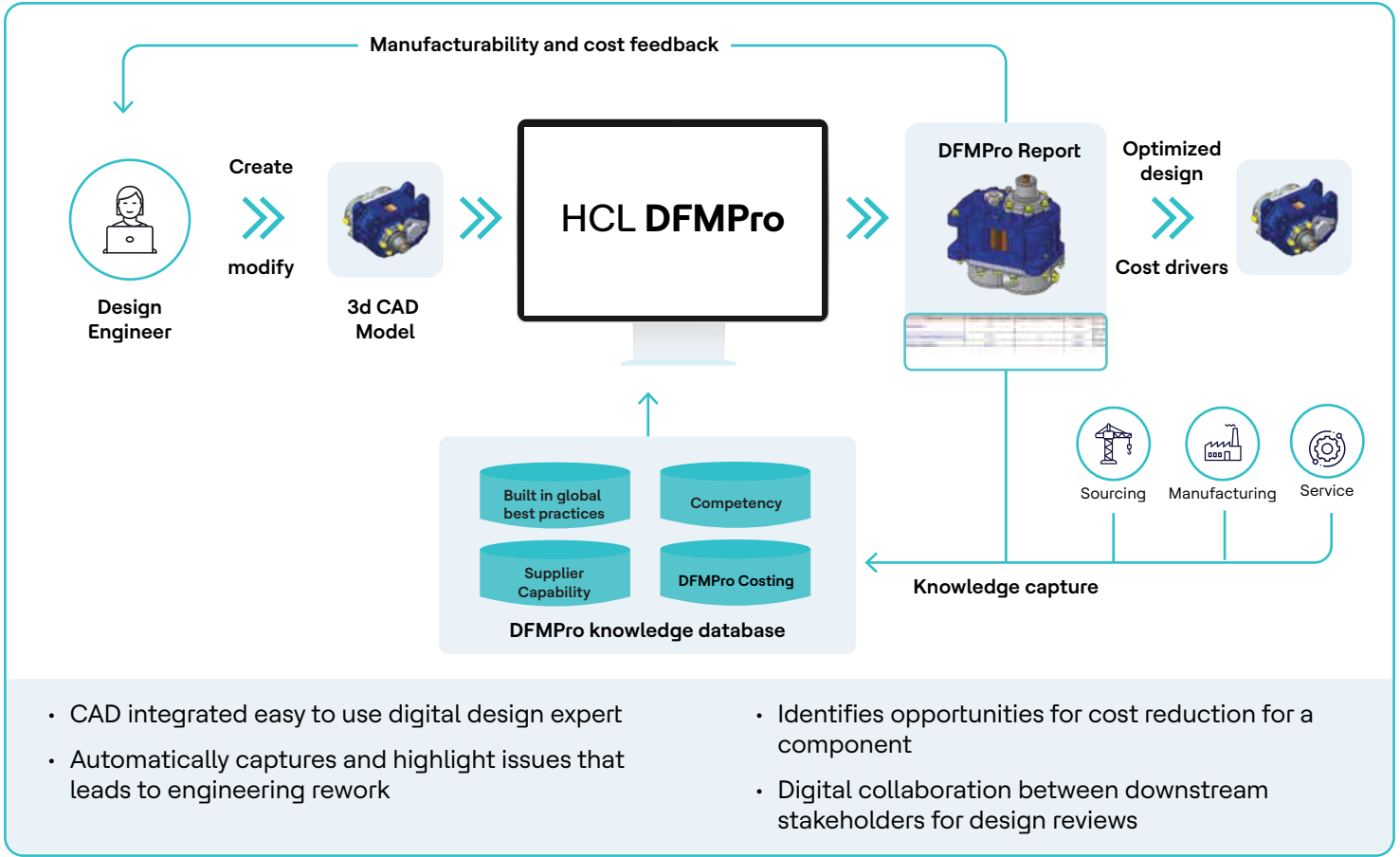
Product design as a function across industries is undergoing significant transformation, driven by an increasing focus on efficiency and cost reduction. Global successful companies are adopting advanced software solutions to streamline design processes and enhance collaboration among teams. However, challenges persist, including the integration of these tools with existing systems and the demand for engineers skilled in design principles. Additionally, as the manufacturing sector embraces digitalization, organizations must navigate complexities related to data management and cybersecurity. To succeed in this competitive landscape, businesses must leverage innovative technologies while addressing these challenges to optimize product design and improve manufacturing outcomes.

HCL DFMPPro is an easy-to-use CAD-integrated Design-for-Manufacturing (DFM) software. It identifies & provides recommendations to resolve potential downstream manufacturing issues.

DFMPPro is well integrated within CAD platforms like Creo Parametric, SOLIDWORKS®, NX and CATIA V5, and 3DEXPERIENCE which ensures that users are able to identify and rectify design for manufacturing checks within their own CAD platform.

Product Design Challenges	HCL DFMPPro Benefits
Overwhelming and expensive engineering change orders (ECO ECN)	Capture design issues early and reduce engineering rework
Product cost escalations and depleting margins	Understand opportunities for cost reduction at design stage to save cost
Product launch delays	Avoids late stage engineering changes and time-consuming rework
Dispersed organizational knowledge	Capture best practices and bring standardization to design reviews

HCL DFMPPro – A Digital Design Expert



HCL DFMPPro Supports All Major CAD Platforms with Native Integration

DFMPPro for CATIA V5

DFMPPro for NX

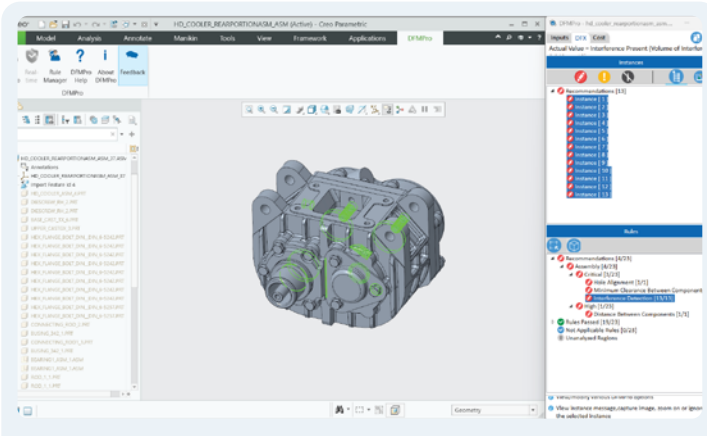
DFMPPro for CREO

DFMPPro for SOLIDWORKS

DFMPPro for 3DEXPERIENCE

Request Demo

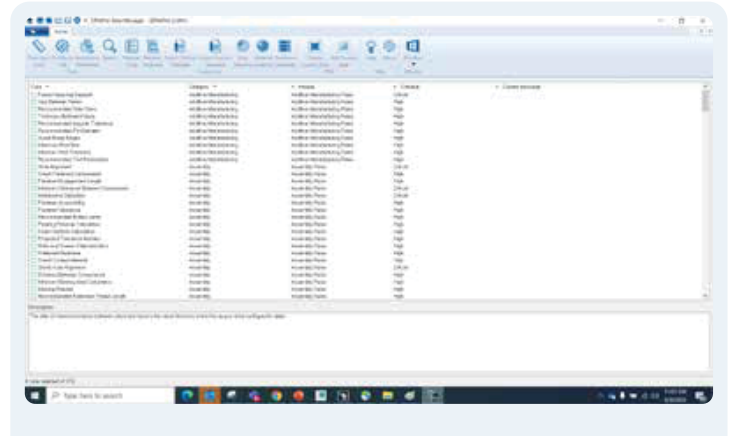
Easy and Powerful DFM Software to Drive Measurable Results Fast



Automate the DFM Review Process

- DFMPRO automates and formalizes the design review process

Seamlessly integrated inside DS CATIA V5, PTC CREO Parametric, Siemens NX, SOLIDWORKS®, and 3DEXPERIENCE



Rule Manager

- Selects and configures organization specific guidelines as design rules
- Brings standardization in design review process

Industry Best Practices



Engineering best practices



Supplier capabilities



Standardization requirements

Organization Best Practice Knowledge Capture and Dissemination



Sourcing



Manufacturing



Service

Enable Knowledge Capture & Dissemination

- Capture in-house tribal knowledge, knowledge of retiring workforce, best practices, and industry standards
- Facilitate continuous design improvements across the entire enterprise

Enterprise Systems

PLM

ERP

MES

Others

< Integration >

Product Engineering

DFMPRO Solution



3D model



>> Input



Best Practices



>> Output



DFMPRO recommendations

Easily Integrates Into Existing Enterprise Infrastructure

- Integrates easily with PLM, ERP, and MES systems
- Scalable framework for capturing and disseminating manufacturing knowledge upstream

DFX Server Solution

HCL DFX Server Solution is an extended capability of HCL DFMPPro for customers who face challenges related to rework, cost, and quality for large assemblies. With DFX Server Solution, designers can check the impact of part and sub-assembly level changes on higher modules and assemblies prior to submitting their designs in an offline mode on the server. As a result, large assemblies that would have been excluded from an automated DFMPPro analysis earlier are now included right at the design stage. DFX Server Solution benefits include:



Batch jobs to run multiple analysis requests simultaneously



Faster processing for timely design validation

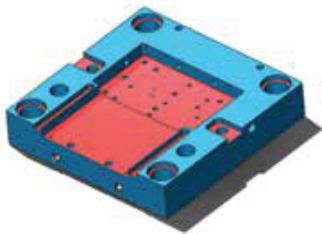


Uninterrupted workflow for designers

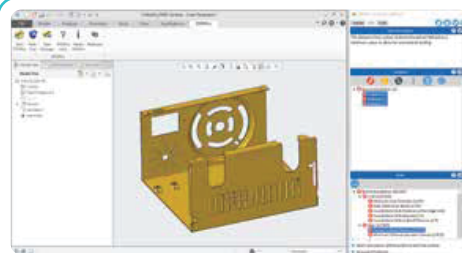


Access to dashboard in DFMPPro costing

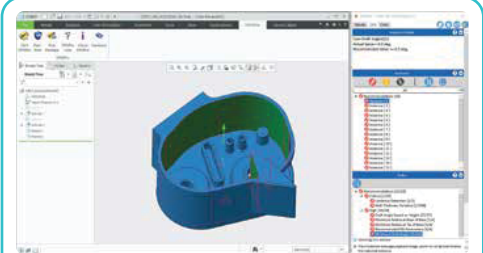
HCL DFMPPro Supports : 15+ Manufacturing Processes



Machining



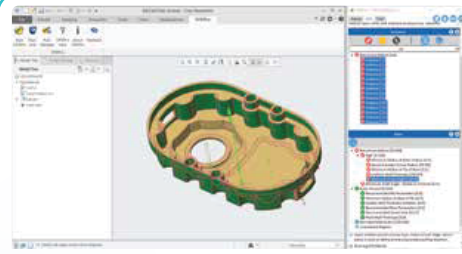
Sheet Metal



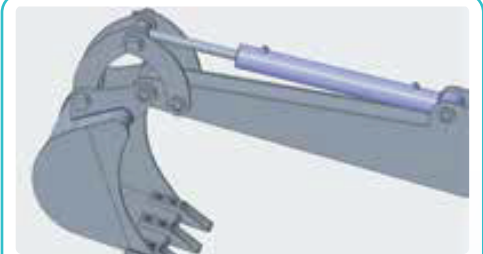
Injection Moulding



Assembly



Die Casting



Welding

+ many more

DFMPro Costing

DFMPro Costing provides early cost visibility to design engineers right from when designs are getting created.

- Evaluate design choices based on material, features, geometry & manufacturing regions
- Identify expensive design features impacting cost due to manufacturability and get recommendations for cost reduction
- Track cost as designs are created
- Apply standardization and component re-use



DFX Analytics

DFX Analytics provides visibility to check product design metrics



For more information



<https://www.dfmpro.com>



dfmpro.marketing@hcl-software.com



About HCLSoftware

HCL Software is a global leader in software innovation, dedicated to powering the Digital+ Economy. We develop, market, sell, and support transformative solutions across business and industry, intelligent operations, total experience, data and analytics, and cybersecurity. Built on a rich heritage of pioneering spirit and unwavering commitment to customer success, we deliver best-in-class software products that empower organizations to achieve their goals. Our core values of integrity, inclusion, value creation, people centricity, and social responsibility guide everything we do. HCL Software serves more than 20,000 organizations, including a majority of the Fortune 100 and almost half of the Fortune 500.